



## Produkt specifications

Capacity	15 users
Height	1'850 mm
Height incl. ventilation system	2'000 mm
Length	2'000 mm
Depth	570 mm
Depth incl. shoe compartment	800 mm
Frame	Alloy steel
Seating bench	Oak wood
Weight / incl. shoe comp., bench + ventilation	175 kg / 261 kg
Power supply (Volt)	110 / 230 VAC
Power consumption avg. / max. (Watt)	< 5 W / 20 W
Power consumption ventilation system avg. / max. (Watt)	10 W / 30 W
Certificate	CE marked (EG 765/2008)

### Basic equipment

### Price (in CHF)\*

Metal frame (white incl. signage labels)	
15 storage compartments (black, with inside pockets)**	
Retractable hanger (inside the storage comp.)	
Shoe holder inside the storage comp. (plastic insert)	
Compatibility with padlock	

### Total

**4'720**

### Electronic

### Price (in CHF)\*

Electronic storage comp. locking (RFID) <sup>1</sup>	3'800
Integration of access control system (LAN cables, access manager, software)	o/r
Backup battery with 12h run-time (alarm, lock)	incl.
Power connection	incl.

### Security & hygiene\*\*\*

### Price (in CHF)\*

Alarm system	600
Ventilation system	800
Tilted roof	100

### Shoe compartment with bench\*\*\*

Shoe compartment with bench	3'600
Electronic shoe compartment locking	1'600

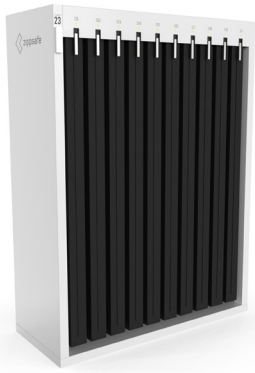
### Mobility & individual customisation

System on wheels	190
Extended backup battery (2 weeks)	400
Dimensions, colours and stickers (e.g. logo)	o/r

<sup>1</sup>free-float or personal assignment, compatible with access control system (e.g. Ethelred, Kaba, Salto) or RFID ISO 14443/MIFARE  
\*prices excl. VAT

\*\*Trevira CS, fire protection according to EN-13501-1-B-s1d0

\*\*\*available with electronic locking only


**Product specifications**

Capacity	10 users
Height	1'850 mm
Height incl. ventilation system	2'000 mm
Length	1'375 mm
Depth	570 mm
Depth incl. shoe compartment	800 mm
Frame	Alloy Steel
Seating bench	Oak wood
Weight / incl. shoe comp., bench + ventilation	139 kg / 193 kg
Power supply (Volt)	110 / 230 VAC
Power consumption avg. / max. (Watt)	< 5 W / 20 W
Power consumption ventilation system avg. / max. (Watt)	10 W / 30 W
Certificate	CE marked (EG 765/2008)

Basic equipment	Price (in CHF)*
Metal frame (white incl. signage labels)	
10 storage compartments (black, with inside pockets)**	
Retractable hanger (inside the storage comp.)	
Shoe holder inside the storage comp. (plastic insert)	
Compatibility with padlock	
<b>Total</b>	<b>3'950</b>

Electronic	Price (in CHF)*
Electronic storage comp. locking (RFID) <sup>1</sup>	3'200
Integration of access control system (LAN cables, access manager, software)	o/r
Backup battery with 12h run-time (alarm, lock)	incl.
Power connection	incl.

Security & hygiene***	Price (in CHF)*
Alarm system	500
Ventilation system	800
Tilted roof	75

Shoe compartment with bench***	Price (in CHF)*
Shoe compartment with bench	3'100
Electronic shoe compartment locking	1'200

Mobility & individual customisation	Price (in CHF)*
System on wheels	190
Extended backup battery (2 weeks)	400
Dimensions, colours and stickers (e.g. Logo)	o/r

<sup>1</sup>free-float or personal assignment, compatible with access control system (e.g. Ethelred, Kaba, Salto) or RFID ISO 14443/MIFARE  
\*prices excl. VAT

\*\*Trevira CS, fire protection according to EN-13501-1-B-s1d0

\*\*\*available with electronic locking only