



Product specifications

Capacity	15 users
Height	1.85 m
Height incl. ventilation system	2.00 m
Length	2.00 m
Depth	0.55 m
Depth incl. shoe compartment	0.80 m
Frame	Alloy steel
Power supply (Volt)	110 / 230 V
Power consumption avg. / max. (Watt)	< 5 W / 25 W
Power consumption ventilation system avg. / max. (Watt)	10 W / 30 W
Certificate	CE marked (EG 765/2008)

Basic system

Price (in CHF)*

- Metal frame (white incl. signage labels)
- 15 Zippsafe bags (black, with inside pockets)**
- Retractable hanger (inside the Zippsafe bag)
- Shoe holder inside the bag (plastic insert)
- Compatibility with padlock

Total

4'720

Security & hygiene***

Price (in CHF)*

- Alarm system 600
- Ventilation system 800
- Tilted roof 100

Shoe compartment with bench***

- Shoe compartment with bench 3'600
- Shoe compartment locking (electronic) 1'600

Electronic

Price (in CHF)*

- RFID reader¹ 3'800
- RFID reader with Badge Management System (BMS)² 3'800
- Integration BMS (LAN cables, access manager, software) o/r
- Backup battery with 12h run-time (alarm, lock) incl.
- Power connection incl.

Mobility & individual customisation

- System on wheels 190
- Extended backup battery (2 weeks) 400
- Dimensions, colours and stickers (e.g. Logo) o/r

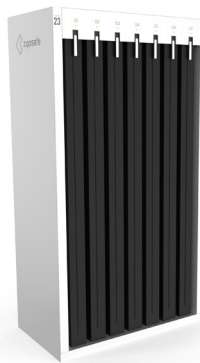
*prices excl. VAT

**fire protection according to ISO EN-13501-1-B-s1d0 / DIN 4102-B1 / BKZ 5.1

***available with electronic locking only

¹compatible with RFID ISO 14443 A / MIFARE (free-float or personal assignment)

²Kaba, Ethelred or Salto software (free-float or personal assignment)



Product specifications

Capacity	7 users
Height	1.85 m
Height incl. ventilation system	2.00 m
Length	1.00 m
Depth	0.55 m
Depth incl. shoe compartment	0.80 m
Frame	Alloy Steel
Power supply (Volt)	110 / 230 V
Power consumption avg. / max. (Watt)	< 5 W / 25 W
Power consumption ventilation system avg. / max. (Watt)	10 W / 30 W
Certificate	CE marked (EG 765/2008)

Basic system

Price (in CHF)*

Metal frame (white incl. signage labels)
7 Zippsafe bags (black, with inside pockets)**
Retractable hanger (inside the Zippsafe bag)
Shoe holder inside the bag (plastic insert)
Compatibility with padlock

Total

3'485

Security & hygiene***

Price (in CHF)*

Alarm system	450
Ventilation system	800
Tilted roof	75

Shoe compartment with bench***

Shoe compartment with bench	2'700
Shoe compartment locking (electronic)	800

Electronic

Price (in CHF)*

RFID reader ¹	2'850
RFID reader with Badge Management System (BMS) ²	2'850
Integration BMS (LAN cables, access manager, software)	o/r
Backup battery with 12h run-time (alarm, lock)	incl.
Power connection	incl.

Mobility & individual customisation

System on wheels	190
Extended backup battery (2 weeks)	400
Dimensions, colours and stickers (e.g. Logo)	o/r

*prices excl. VAT

**fire protection according to ISO EN-13501-1-B-s1d0 / DIN 4102-B1 / BKZ 5.1

***available with electronic locking only

¹compatible with RFID ISO 14443 A / MIFARE (free-float or personal assignment)

²Kaba, Ethelred or Salto software (free-float or personal assignment)